



Cabiya Distributor Corp.

Angel Cabiya | CEO

www.cabiyadistributor.com | 787-371-0100
Po Box 1752, Ciales, PR, 00638 | acabiya.cdc@gmail.com



Fluid Filtration & Separation Equipment

Quality Vessels

We manufacture a variety of standard design vessels to handle flow rates between 5 and 5,000 gpm at pressure ratings ranging from 75 to 3,000 psi. For special system requirements, our engineers will custom design a system to meet your needs. Strainrite vessels are fabricated from the highest quality materials and conform to strict quality standards. Materials of construction include Carbon Steel, 304, 316, Duplex Stainless, Alloy C 276, Alloy 20, and Titanium.



Assurance Testing

At Strainrite, we believe in Science and Service. Strainrite offers vessels that are manufactured in an ISO9001:2008 certified facility and are hydrostatically tested in accordance with industry accepted standards. We also offer special quality assurance tests which include X-ray, Magnetic Particle, Liquid Penetrant, Ultra-sonic and Brinell hardness testing.

Long-term Partnership

Our consultative selling approach focuses on custom solutions to filtration problems. We commit the time and resources to tailor our products to our clients' unique requirements.

By working with us, our clients realize:

- Innovative solutions
- Operational cost savings
- Improved process efficiency
- Enhanced finished product quality
- Reduced waste costs

Our technical and scientific staff works closely with our clients during the validation process. The focus of this support is to offer technical advice on developing effective protocols and experimental testing parameters to assure predictable and repeatable output results.



VESSEL PRODUCTS



Cartridge Vessels

SRCT <i>Sanitary Cartridge Vessel</i>	128
SRC <i>Industrial Duty Cartridge Vessels</i>	130
SRVC <i>Value Design Cartridge Vessels</i>	132

Hybrid & Bag Vessels

SRL <i>Low Flow Vessels</i>	134
SRX/SRMX <i>"X-Tra Seal" Vessels</i>	136
SRHD <i>Heavy Duty Bag Vessels</i>	138



TABLE OF CONTENTS

Hybrid & Bag Vessels (continued)

SRID <i>Industrial Duty Bag Vessels</i>	140
SRVB <i>Value Design Bag Vessels</i>	142
SRMB <i>Multi-Basket Vessels</i>	144

Specialty Housing

SRMS <i>Manifold System</i>	146
SMF & HSMF <i>for MAXX Flow & High Flow</i>	148
AQ2 <i>Aqua-Rite Vessels, FDA compliant</i>	150

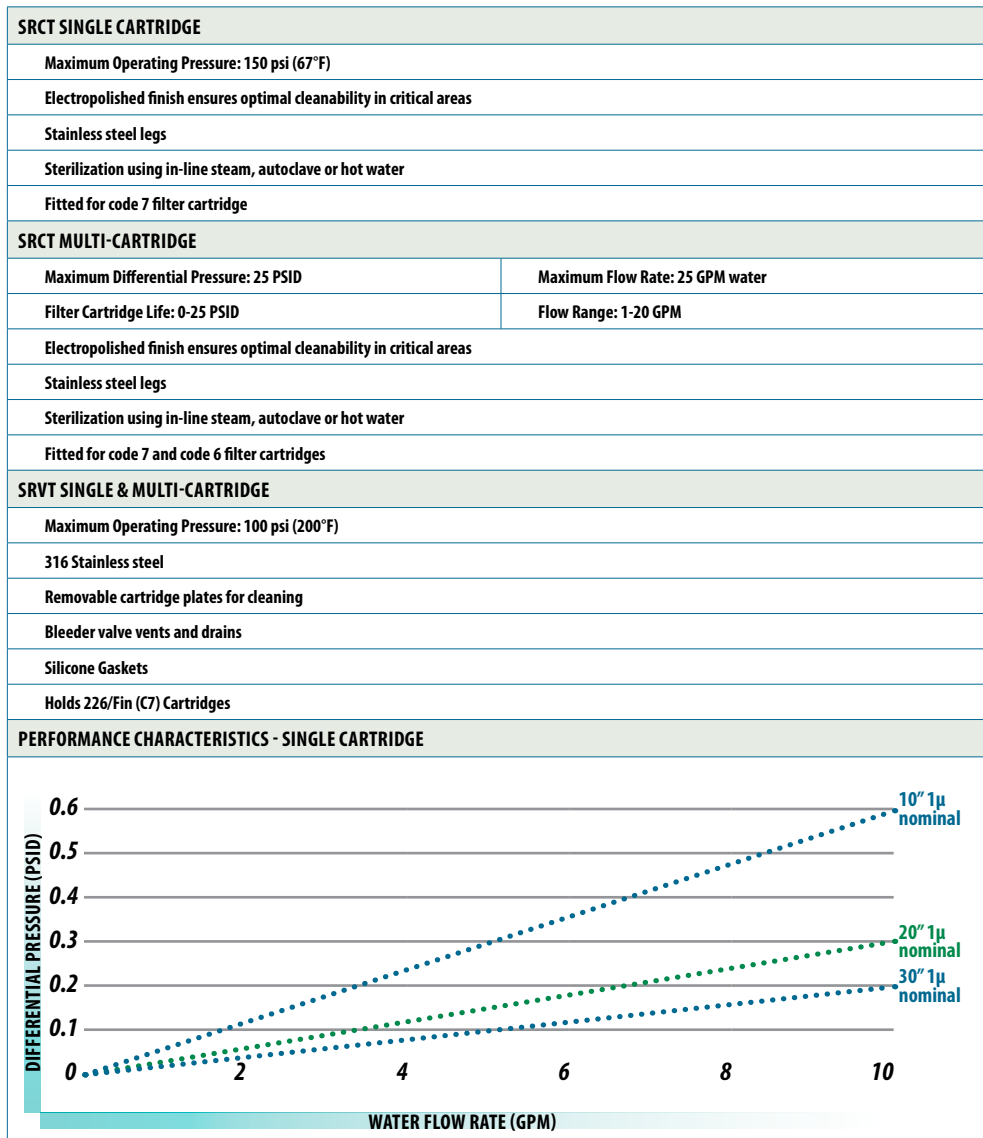
SRCT / SRVT

150 PSI / 100 PSI Sanitary 316L Stainless Steel Cartridge Vessels

The **SRCT** and **SRVT Sanitary Cartridge Vessels** offer the aesthetics and operational durability of stainless steel at affordable prices. The **SRCT's** innovative design ensures optimal cleanability in critical areas and can accommodate either 10", 20" or 30" cartridges in a single cartridge housing and 20", 30" or 40" filter cartridges in a multi-cartridge vessel.

SRCT filters are designed specifically for liquid filtration in the food and beverage industry, offering microbiological safety, corrosion resistance and durability.

SRVT filters offer the same innovative design with a 100 PSI maximum operating pressure at 200°F.



NEED ELEMENTS FOR YOUR VESSEL?

The following are most commonly used with the SRCT and SRVT line:

CLARITY MEMBRANE—PAGES 4-15

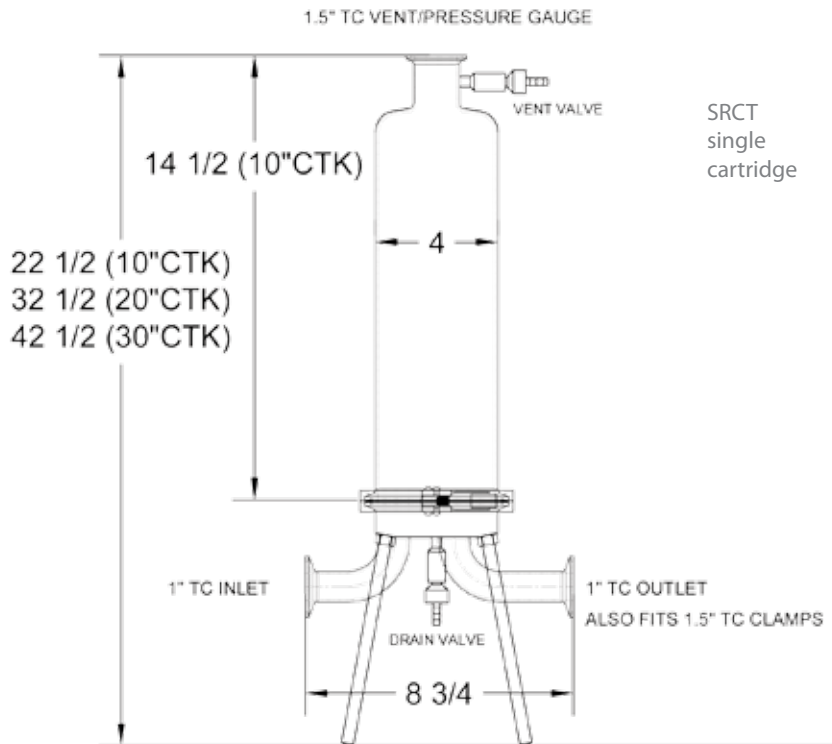
CLARITY DUAL-PLEAT—PAGES 16-17

CLARITY DEPTH—PAGES 18-37

CLARITY SPECIALTY—PAGES 38-67

As always, discuss your options with your local sales representative to find the best fit for your application.

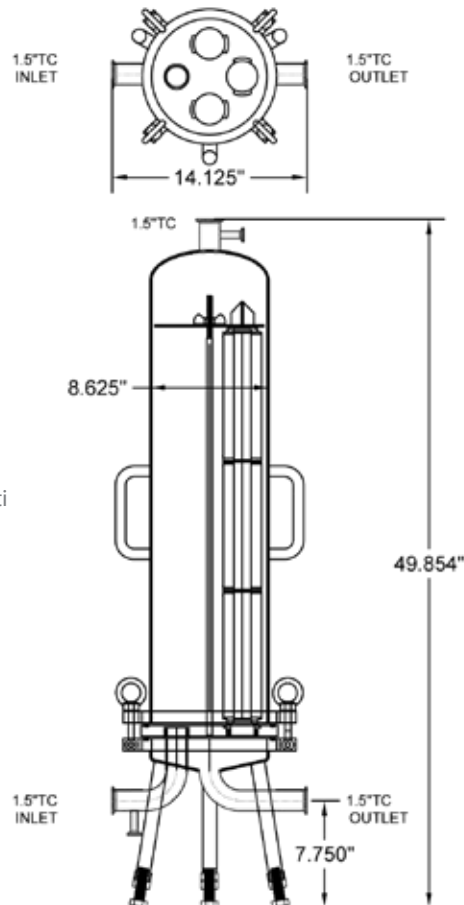
ORDER GUIDE



SRCT
single
cartridge



SRVT multi
cartridge



ORDER OPTIONS - SRCT

VESSEL	
SRCT	Strainrite Sanitary Cartridge Vessel
CARTRIDGE COUNT	
1RND	1-round cartridge
3RND	3-round cartridges
5RND	5-round cartridges
8RND	8-round cartridges
12RND	12-round cartridges
18RND	18-round cartridges
24RND	24-round cartridges
30RND	30-round cartridges
ELEMENT LENGTH	
*10, 20, 30, **40	
<small>*1-cartridge house only **Not available with 1-cartridge housing</small>	
INLET/OUTLET	
1TC	1" Tri-Clover*
2TC	2" Tri-Clover
3TC	2" Tri-Clover
<small>*1-cartridge house only</small>	
CONSTRUCTION MATERIALS	
C	316 Stainless Steel
END-CAP	
C6	Flat/226
C7	Fin/226

ORDER OPTIONS - SRVT

VESSEL	
SRVT	Strainrite Sanitary Cartridge Vessel - 100 psi
CARTRIDGE COUNT	
1RND	1-round cartridge
3RND	3-round cartridges
5RND	5-round cartridges
7RND	7-round cartridges
12RND	12-round cartridges
ELEMENT LENGTH	
*10, *20, 30	
<small>*1-cartridge house only</small>	
INLET/OUTLET	
1TC	*1" Tri-Clover
1.5TC	**1.5" Tri-Clover
2TC	***2" Tri-Clover
<small>*1-cartridge house only **3,5,7-cartridge house only ***12-cartridge house only</small>	
CONSTRUCTION MATERIALS	
C	316 Stainless Steel
END-CAP	
C7	Fin/226

This is not a comprehensive list. We can build your vessel to suit your specifications. Call one of our customer service representatives for pricing and availability.

The Strainrite Companies is known for developing some of the industry's most advanced designed hybrid cartridge elements on the market. These high efficiency filter elements require a vessel that has a hermetically sealed top to fully capture all of the filters capabilities. The **SRC Industrial Duty Cartridge Vessel** is perfectly positioned to handle standard cartridges and absolute rated filters.

SRCI SERIES SINGLE CARTRIDGE		
150 psi design pressure	O-ring sealed cover	
Inlet and outlet connections: ¾" - 1" NPT		
Optional: ¼" NPT vent port in lid	Optional: Polypropylene inline in 10", 20" housing	
SRCI SERIES MULTI-CARTRIDGE		
150 psi design pressure	O-ring sealed cover	
Inlet and outlet connections: 2" NPT & RFF		
Band Clamp style, 2.5"- 2.75" Cartridge OD - available in 4, 5, 7, 12 round	Swing Bolt style, 2.5" Cartridge OD - available in 22, 36 round	
Optional: 3" NPT or RFF connections	Optional: Eye nut closure system	
SRC8 SERIES		
150 psi design pressure	O-ring sealed cover (Buna N)	
Side in/Bottom out	Swing Bolt style	Tripod stand
4 round - 226 Style, 8" Housing Diameter		
5 round - 2.75" cartridge OD, 8" Housing Diameter		
6 round - 2.5" cartridge OD, 8" Housing Diameter		
SRC16, SRC20, SRC26 SERIES		
150 psi design pressure	O-ring sealed cover (Buna N)	
Side in/Bottom out	Swing Bolt style	Tripod stand
19 round - 2.75" cartridge OD, 16" Housing Diameter		
31 round - 2.75" cartridge OD, 20" Housing Diameter		
54 round - 2.75" cartridge OD, 26" Housing Diameter		



SRC
multi-cartridge

NEED ELEMENTS FOR YOUR VESSEL?

The following are most commonly used with the SRC line:

CLARITY MEMBRANE—PAGES 4-15

CLARITY DUAL-PLEAT—PAGES 16-17

CLARITY DEPTH—PAGES 18-37

CLARITY SPECIALTY—PAGES 38-67

As always, discuss your options with your local sales representative to find the best fit for your application.

ORDER GUIDE



With a radial seal, the SRC has a machined surface that produces a positive seal to eliminate bypass. The SRC vessel is raising the bar in the Original Equipment Manufacture market by delivering superior value in a cost-effective design.



SRCI
single
cartridge

ORDER OPTIONS - SRCI

VESSEL	
SRCI	Strainrite Industrial Duty Cartridge Vessel SRCI Series
MATERIAL	
B PP	304 Stainless Steel *Polypropylene <small>*1-cartridge, 10 & 20" housing only</small>
CARTRIDGE COUNT	
1, 4, 5, 7, 12	
ELEMENT LENGTH	
10, 20, 30, *40 <small>*Not available with 1-cartridge housing</small>	
INLET/OUTLET	
3/4 1 2 2F 3 3F 4F 6F	*3/4" NPT *1" NPT 2" NPT 2" RFF 3" NPT 3" RFF 4" RFF 6" RFF <small>*1-cartridge house only</small>
O-RING	
V B E	Fluorocarbon Buna N EPDM

ORDER OPTIONS - SRC8

VESSEL	
SRV8	Strainrite Industrial Duty Cartridge Vessel SRC8 Series
ELEMENT LENGTH	
30, 40	
CARTRIDGE COUNT	
4, 5, 6	
INLET/OUTLET	
2 2F 3 3F	2" NPT 2" FLG 3" NPT 3" FLG
CONSTRUCTION MATERIALS	
A B C	Carbon Steel 304 Stainless Steel 316 Stainless Steel
END-CAP	
C1 C3 C6 C7 C8	Double Open Ends Flat/222 Flat/226 Fin/226 Fin/222

ORDER OPTIONS - SRC16

VESSEL	
SRV16	Strainrite Industrial Duty Cartridge Vessel SRC16 Series
ELEMENT LENGTH	
30, 40	
CARTRIDGE COUNT	
19	
INLET/OUTLET	
3F	3" FLG
CONSTRUCTION MATERIALS	
A B C	Carbon Steel 304 Stainless Steel 316 Stainless Steel
END-CAP	
C1 C3 C6 C7 C8	Double Open Ends Flat/222 Flat/226 Fin/226 Fin/222

ORDER OPTIONS - SRC20

VESSEL	
SRV20	Strainrite Industrial Duty Cartridge Vessel SRC20 Series
ELEMENT LENGTH	
30, 40	
CARTRIDGE COUNT	
31	
INLET/OUTLET	
4F	4" FLG
CONSTRUCTION MATERIALS	
A B C	Carbon Steel 304 Stainless Steel 316 Stainless Steel
END-CAP	
C1 C3 C6 C7 C8	Double Open Ends Flat/222 Flat/226 Fin/226 Fin/222

ORDER OPTIONS - SRC26

VESSEL	
SRV26	Strainrite Industrial Duty Cartridge Vessel SRC26 Series
ELEMENT LENGTH	
30, 40	
CARTRIDGE COUNT	
54	
INLET/OUTLET	
6F	6" FLG
CONSTRUCTION MATERIALS	
A B C	Carbon Steel 304 Stainless Steel 316 Stainless Steel
END-CAP	
C1 C3 C6 C7 C8	Double Open Ends Flat/222 Flat/226 Fin/226 Fin/222

This is not a comprehensive list. We can build your vessel to suit your specifications. Call one of our customer service representatives for pricing and availability.

The SRVC Value Design Cartridge Vessels provide economical filtration of a wide variety of liquids in a lightweight, externally polished stainless steel design, with features including a swing bolt secured, quick opening cover and an internal positive pressure cartridge alignment and sealing plate.

The SRVC vessels accommodate either a single 10" or 20" long, double open end (DOE) or 222 single open end (SOE) filter cartridge. These vessels are manufactured from polished and passivated 304 stainless steel and rated for 100 psi. For added corrosion resistance, all cover bolt and leg mounting hardware is made from stainless steel as well.

SRVC SINGLE & MULTI-CARTRIDGE	
Maximum Allowable Pressure: 100 psi	Maximum Allowable Temperature: 300°F (149°C)
Convertible design allows for the use of both DOE and SOE cartridges	
Standard Seals: Fluorocarbon (other material options available)	
Single O-ring design closure assures quick, positive cover sealing	
Code Design: Non-ASME	
Vent and drain connections	
Polished exterior & pickle passivate interior /exterior for enhanced corrosion resistance	
SRVC SINGLE CARTRIDGE	
Clamped o-ring closure seal provides quick and positive seal	
In-line 1" FNPT threaded pipe connections for easy installation	
Head mounting kit included	
SRVC MULTI-CARTRIDGE	
Swing bolts for fast and easy opening and closing of cover	
Swing bolted o-ring closure seal provides quick and positive seal and easy access to the vessel interior and filter cartridges	
Standard threaded FNPT vent & drains	
Standard stainless steel cartridge support and sealing hardware	



SRVC
multi-cartridge

NEED ELEMENTS FOR YOUR VESSEL?

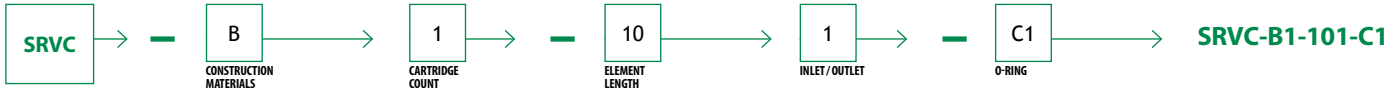
The following are most commonly used with the SRVC line:

CLARITY DEPTH—PAGES 18-37

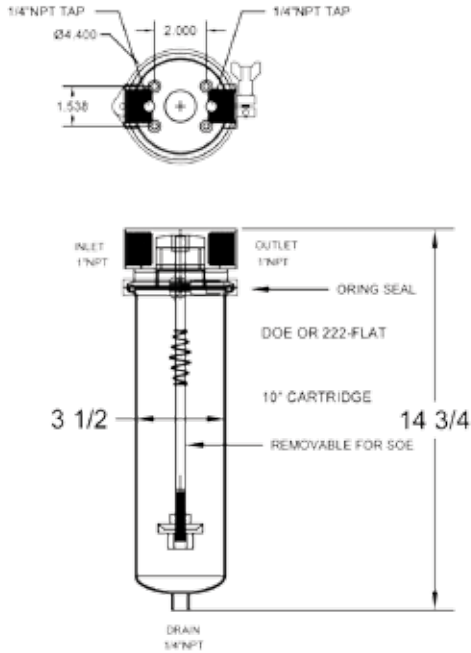
CLARITY SPECIALTY—PAGES 38-67

As always, discuss your options with your local sales representative to find the best fit for your application.

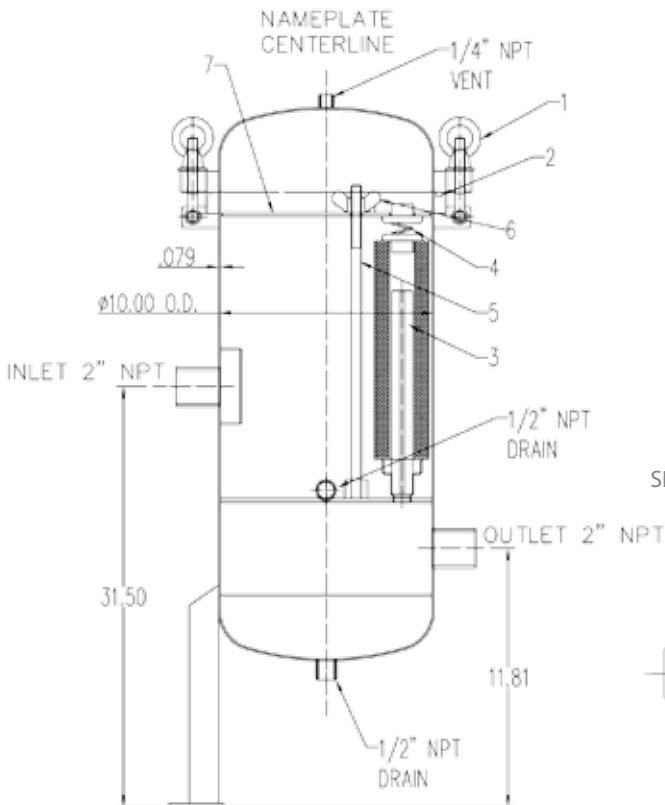
ORDER GUIDE



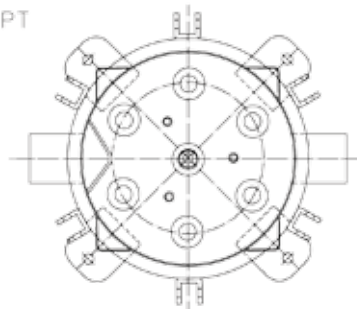
SRVC-B1-101V



SRVC single cartridge



SRVC-B7-402V



ORDER OPTIONS

VESSEL	
SRVC	Strainrite Value Design Cartridge Vessel Series
MATERIAL	
B	304 Stainless Steel
CARTRIDGE COUNT	
	1*, 5, 7, 11, 19
<small>*Single-round housing accepts C1 (DOE) and C3 (flat/222) cartridges only</small>	
ELEMENT LENGTH	
	*10, **20, 30, ****40
<small>*1-cartridge house only **Not available with 7, 11 or 19-cartridge housing ***Not available with 1-cartridge housing</small>	
INLET/OUTLET	
1	*1" NPT
2	**2" NPT
2F	***2" RFF
3F	****3" RFF
4F	*****4" RFF
<small>*1-cartridge house only **5-cartridge 30" / 7-cartridge 30 or 40" only ***5-cartridge 20, 30 or 40" / 7-cartridge 30" or 40" only ****11-cartridge 30 or 40" only *****19-cartridge 30 or 40" only</small>	
O-RING	
V	Fluorocarbon
B	*Buna N
E	*EPDM
<small>*Special request only</small>	

This is not a comprehensive list. We can build your vessel to suit your specifications. Call one of our customer service representatives for pricing and availability.

The **SRL Low Flow Vessel** is versatile in its ability to function as a strainer or add a filter bag and convert it to a liquid filtration housing unit. The **SRL Series** vessels come in two standard sizes, tailored to your throughput requirements. The **SRL 1-25** is rated for 30 gpm, and the **SRL 1-50** at 65 gpm. All sizes are available in three different closure designs for ease of cleaning/replacing and for easy removal without specific tools.

Unfiltered liquid enters the housing above the bag or basket and flows through. Because solids are contained inside the bag or basket, removal is made easy when service is required. Basket strainers and bag filters are selected to comply with specific application requirements.

SRL FEATURES																													
Inlet/Outlet Orientation: Side-in Bottom-out																													
Low Pressure Drop	Positive Cover Seal																												
Easily Cleaned	Heavy Duty Perforated Basket																												
Pipe Sizes from 0.5" to 2" NPT, RFF or quick disconnect	0.25" NPT Vent Tap																												
SRL OPTIONAL FEATURES																													
Inlet/Outlet Orientation: Side-in Side-out																													
Epoxy coating, electro-polish & fuse coating																													
Higher pressure ratings available																													
Compression devices																													
Custom designs																													
Sanitary construction																													
Mesh-lined basket for straining applications: 50 micron & higher																													
Band Clamp, Swing Bolt & Swing Away Closures available in both sizes																													
ASME Code Stamp Available on swing bolt design																													
FILTER STYLES ACCEPTED																													
Install a bag filter of indicated size	Accepts ring collar only																												
PERFORMANCE CHARACTERISTICS - SINGLE CARTRIDGE																													
<table border="1"> <caption>Performance Characteristics - Single Cartridge</caption> <thead> <tr> <th>Water Flow Rate (GPM)</th> <th>10" 1μ nominal (PSID)</th> <th>20" 1μ nominal (PSID)</th> <th>30" 1μ nominal (PSID)</th> </tr> </thead> <tbody> <tr> <td>0</td> <td>0.0</td> <td>0.0</td> <td>0.0</td> </tr> <tr> <td>2</td> <td>0.05</td> <td>0.02</td> <td>0.01</td> </tr> <tr> <td>4</td> <td>0.15</td> <td>0.05</td> <td>0.02</td> </tr> <tr> <td>6</td> <td>0.30</td> <td>0.10</td> <td>0.04</td> </tr> <tr> <td>8</td> <td>0.45</td> <td>0.15</td> <td>0.06</td> </tr> <tr> <td>10</td> <td>0.60</td> <td>0.20</td> <td>0.08</td> </tr> </tbody> </table>		Water Flow Rate (GPM)	10" 1μ nominal (PSID)	20" 1μ nominal (PSID)	30" 1μ nominal (PSID)	0	0.0	0.0	0.0	2	0.05	0.02	0.01	4	0.15	0.05	0.02	6	0.30	0.10	0.04	8	0.45	0.15	0.06	10	0.60	0.20	0.08
Water Flow Rate (GPM)	10" 1μ nominal (PSID)	20" 1μ nominal (PSID)	30" 1μ nominal (PSID)																										
0	0.0	0.0	0.0																										
2	0.05	0.02	0.01																										
4	0.15	0.05	0.02																										
6	0.30	0.10	0.04																										
8	0.45	0.15	0.06																										
10	0.60	0.20	0.08																										



NEED ELEMENTS FOR YOUR VESSEL?

The following are most commonly used with the SRL line:

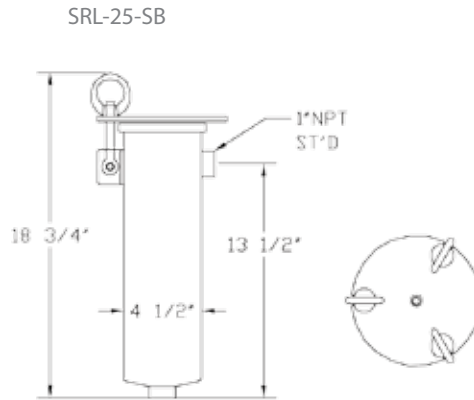
FILTER BAGS—PAGES 98-124

As always, discuss your options with your local sales representative to find the best fit for your application.

ORDER GUIDE

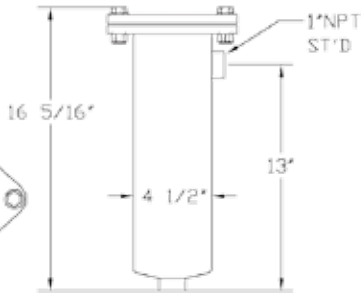


SRL 1-25 with Swing Bolt Closure design
(100 to 300 psi rating)

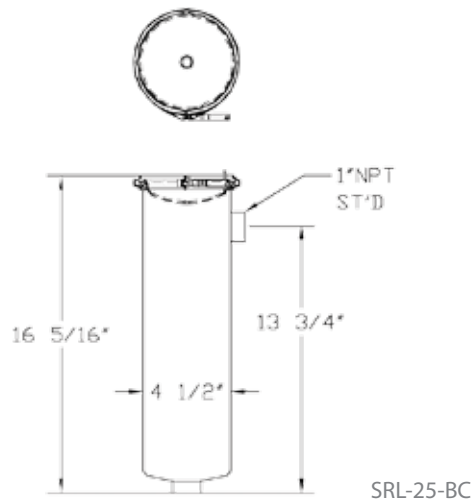


Swing Away Closure design
(100 psi rating)

SRL-25-SW



Band Clamp Closure design
(100 psi rating)



ORDER OPTIONS

VESSEL	
SRL	Strainrite Low Flow Series
BAG SIZE	
3	#3 size bag*
4	#4 size bag*
25	#25 size bag*
50	#50 size bag*
<small>*available in metal ring or Z-flange only</small>	
INLET/OUTLET	
1	1" NPT
1F	1" RFF
1TC	1" Triclover
1.5	1.5" NPT
1.5F	1.5" RFF
1.5TC	1.5" Triclover
2	2" NPT
2F	2" RFF
2TC	2" Triclover
MATERIAL	
A	Carbon Steel
B	304 Stainless Steel
C	316 Stainless Steel
CLOSURE	
BC	Band Clamp
SB	Swing Bolt
SW	Swing Away
OPTIONS	
SAN	Sanitary Design
SO	Side Outlet - Side Out/Same Side
EP	Electro Polish Finish
GT	Differential Pressure Gauge Ports
ML	Mesh-Lined Basket
UM	Code Stamped (SB only)

This is not a comprehensive list. We can build your vessel to suit your specifications. Call one of our customer service representatives for pricing and availability.

SRX / SRMX

"X-Tra Seal" Vessels

The **SRX X-Tra Seal** vessel series was developed by our in-house engineering team for the expressed purpose of eliminating vessel-to-bag bypass, a critical element when high efficiency filtration is required. Strainrite's proprietary "Five Points of Seal" design has proven to be a major advance in filter vessel technology, performing admirably where the competition hasn't.

Featuring an effective seal on all three crucial planes of the bag, (the top, side, and bottom) as well as two additional o-rings that eliminate the likelihood of bypass along the vessel's interior wall, the **SRX** is truly your best choice for high efficiency bag filtration performance. The most efficient filter vessel deserves the most efficient filter bag! Using Strainrite's acclaimed Hi-Pro Micro Series FDA Compliant filter bags ensures the purity of your end product.



SRMX



SRX

NEED ELEMENTS FOR YOUR VESSEL?

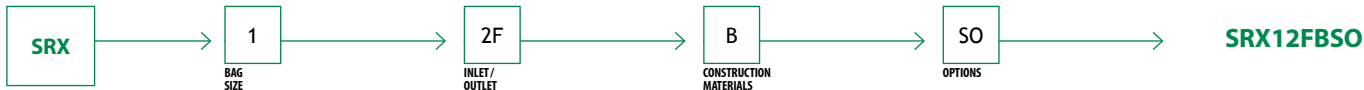
The following are most commonly used with the SRX/SRMX line:

MADD-MAXX—PAGES 74-94

FILTER BAGS—PAGES 98-124

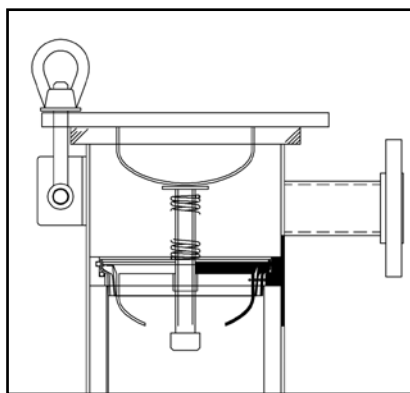
As always, discuss your options with your local sales representative to find the best fit for your application.

ORDER GUIDE

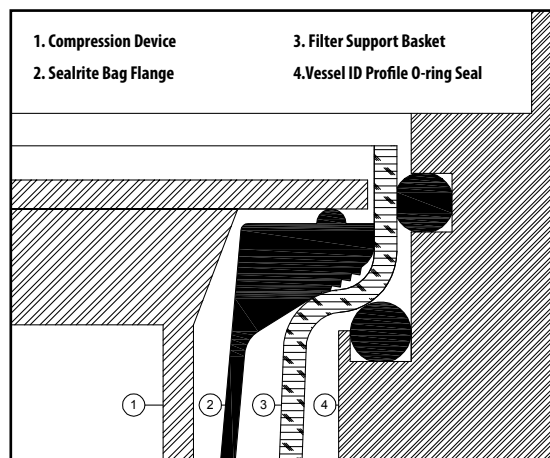


SRX AND SRMX FEATURES	
Double o-ring basket seal eliminates bypass	Built-in volume displacer in cover
Low Pressure Drop	Positive Cover Seal
Standard 150 psi design, available up to 300 psi	Stainless Steel wire mesh basket
ASME Code stamp available on all vessels	Easily cleaned
Covers are O-ring sealed	Large-area, heavy-duty baskets
Carbon steel, stainless steel (304) or (316) construction for housings	
SRX FEATURES	SRMX FEATURES
Inlet/Outlet Orientation: Side-in Bottom-out (standard) Side-in Side-out (optional)	Inlet/Outlet Orientation: Side-in Side-out (standard) Side-in Bottom-out (optional)
Adjustable height tripod stand	
OPTIONAL FEATURES	
Different outlet connections and orientation	
Higher pressure ratings	
Extra-length legs	
Heat jacketing	
Liquid displacers for easier servicing	
MADD-MAXX COMPATIBLE	
SRX and SRMX vessels are widely used in applications where high efficiency filters are required for critical applications in Pharmaceutical and Food & Beverage industries. As such, they are perfectly designed to hermetically seal Strainrite's Madd-Maxx pleated hybrid elements.	

COMPRESSION PLUNGER



VESSEL UNDER COMPRESSION



ORDER OPTIONS - SRX

VESSEL	
SRX	Strainrite X-tra Seal Series
BAG SIZE	
1	#1 size bag
2	#2 size bag
INLET/OUTLET	
2	2" NPT
2F	2" RFF
3	3" NPT
3F	3" RFF
4	4" NPT
4F	4" RFF
MATERIALS	
A	Carbon Steel
B	304 Stainless Steel
C	316 Stainless Steel
OPTIONS	
SAN	Sanitary Design
SO	Side Outlet
EP	Electro Polish Finish
GT	Differential Pressure Gauge Ports
ML	Mesh-Lined Basket
UM	Code Stamped
U	3rd Party ASME Code Inspected
SSB	Swing Bolts/Eye Nut Stainless Steel

ORDER OPTIONS - SRMX

VESSEL	
SRMX	Strainrite Multi-Bag X-tra Seal Series
BAG COUNT	
2, 3, 4, 5, 6, 8, 10	
INLET/OUTLET	
2	2" NPT
2F	2" RFF
3F	3" RFF
4F	4" RFF
6F	6" RFF
8F	8" RFF
10F	10" RFF
MATERIAL	
A	Carbon Steel
B	304 Stainless Steel
C	316 Stainless Steel
OPTIONS	
SAN	Sanitary Design
SIBO	Side In/Bottom Out
ML	Mesh-Lined Basket
UM	Code Stamped
U	3rd Party ASME Code Inspected
SSB	Swing Bolts/Eye Nut Stainless Steel

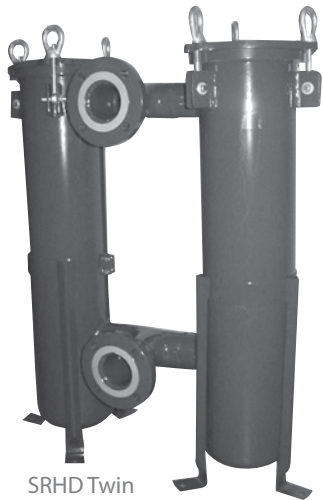
SRHD

Heavy Duty Bag Vessels

The **SRHD Heavy Duty** series is designed to handle your most difficult fluid filtration requirements. Our **SRHD** is made from heavy duty steel components and to strict quality standards, which allows our clients the ability to change from a non-stamped to an ASME UM stamped vessel at a nominal cost. The **SRHD** series incorporates our unique radial seal design that provides a hermetic seal between the basket and vessel. Utilizing a radial seal with our retainer baskets eliminates “basket rocking”, which causes bypass as the basket becomes out of round. “Basket rocking” is common in low cost bag vessels that do not incorporate an O-ring seal and can cause unfiltered liquid bypass. The Strainrite Companies’ **SRHD**, with a radial seal, has a machined surface that produces a positive seal to eliminate bypass. **SRHD** vessels incorporate a combination of unique qualities that places us at the top of single bag vessel design. Standard features include: a recessed basket, volume displacer welded to top cover, and a 304 stainless steel wire mesh basket to name a few. Our standard wire mesh baskets increase available filtration surface area up to 30% compared to cheaper perforated retainer baskets.



SRHD



SRHD Twin

SRHD Twin and **SRHD Duplex** bag vessels offer economical filtration for nominally rated applications between 150 and 300 gpm.

The **SRHD Twin** filter system is comprised of two #2-size housings piped together and joined to a common header. This design divides flow equally between both housings and also reduces cost approximately 50% compared to a multi-bag housing holding 2 bags inside.



SRHD Duplex

The **SRHD Duplex** filter systems offer great flexibility for continuous on-line filtration requirements. This allows for continuous operation by directing the flow from one vessel to another by opening and closing of valves. This allows one side to be serviced, while the other vessel is in use.

NEED ELEMENTS FOR YOUR VESSEL?

The following are most commonly used with the SRHD line:

MADD-MAXX—PAGES 74-94

FILTER BAGS—PAGES 98-124

As always, discuss your options with your local sales representative to find the best fit for your application.

ORDER GUIDE



SRHD FEATURES				
Hermetic radial o-ring sealed retainer basket: Eliminates potential for bypass and "basket rocking"				
Adjustable tri-pod stand: Offers flexibility when plumbing into an existing line				
Inlet/Outlet Orientation: Side-in Bottom-out (standard) Side-in Side-out (optional)		Pipe sizes: 0.75" to 4" NPT, RFF or quick disconnect		
Standard Pressure ratings: 150 psi		Stainless Steel wire mesh basket		
Swing bolt closures		0.25" NPT vent tap		
Low Pressure Drop		Liquid displacers for cleaner servicing		
Adjustable-height legs		Large-area, heavy-duty baskets		
Built-in volume displacer in cover		O-ring seals: Buna N, EPDM, Fluorocarbon, PTFE encapsulated		
SRHD OPTIONAL FEATURES				
Sanitary construction		Different outlet connections and orientations		
Higher pressure ratings		Heat jacketing		
ASME code stamp		Pipe or flange 1" - 4"		
Custom pressure ratings: 300 psi up to 1,000 psi		Compression device		
RECOMMENDED FLOW RATES & SURFACE AREA				
For the following recommended flow rates, vessels need a minimum inlet/outlet size of 2" NPT. The recommended flow for basket and filter combination is for nominally rated filter bags. (High efficiency filter bags excluded)				
PRODUCT	BASKET STRAINER	MESH LINED	RETAINER W/ BAG	SURFACE AREA: SQ. FT.
SRHD 1	150 gpm	100 gpm	75 gpm	2.25
SRHD 2	300 gpm	200 gpm	150 gpm	4.50
SRHD TWIN FEATURES				
Inlet/Outlet Orientation: Side-in Side-out (standard) Side-in Bottom-out (optional)		Adjustable height tripod stand		
150 psi design, available to 1,000 psi		Stainless Steel wire mesh basket		
Positive cover seal		Easily cleaned		
Low Pressure Drop		ASME Code stamp available on all vessels		
SRHD DUPLEX FEATURES				
Inlet/Outlet Orientation: Side-in Side-out (standard) Side-in Bottom-out (optional)		Adjustable height tripod stand		
150 psi design, available to 1,000 psi		Stainless Steel wire mesh basket		
Positive cover seal		Easily cleaned		
Low Pressure Drop		ASME Code stamp available on all vessels		
3-piece ball valves standard		Adjustable height tripod stand		

ORDER OPTIONS

150 PSIG standard. Contact engineering for higher pressures

VESSEL	
SRHD	Strainrite Heavy Duty Series
BAG SIZE	
1	#1 size bag*
2	#2 size bag
*Not available in Twin or Duplex	
INLET/OUTLET	
2	*2" NPT
2F	2" RFF
3	*3" NPT
3F	3" RFF
4	*4" NPT
4F	*4" RFF
*Not available in Twin or Duplex	
MATERIAL	
A	Carbon Steel
B	304 Stainless Steel
C	316 Stainless Steel
STYLE	
- Twin Duplex	Single No valves Valves
OPTIONS	
SAN	Sanitary Design
SO	*Side Outlet
SIBO	**Side In/Bottom Out
EP	Electro Polish Finish
GT	Differential Pressure Gauge Ports
ML	Mesh-Lined Basket
UM	Code Stamped
U	3rd Party ASME Code Inspected
SSB	Swing Bolts/Eye Nut Stainless Steel

*Single vessel option; side in/bottom out is standard
**Twin / Duplex vessel option; side in/side out is standard

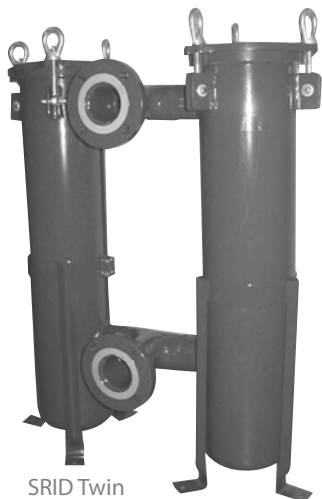
This is not a comprehensive list. We can build your vessel to suit your specifications. Call one of our customer service representatives for pricing and availability.

SRID

Industrial Duty Bag Vessels

The **SRID Industrial Duty** series incorporates our unique radial seal design that provides a hermetic seal between the basket and vessel. Utilizing a radial seal with our retainer baskets eliminates “basket rocking”, which causes bypass as the basket becomes out of round. “Basket rocking” is common in low cost bag vessels that do not incorporate an O-ring seal and can cause unfiltered liquid bypass. The **SRID**, with a radial seal, has a machined surface that produces a positive seal to eliminate bypass.

The Strainrite Companies is known for developing some of the industry’s most advanced designed filter bags and hybrid cartridge elements on the market. These high efficiency filter bags and elements require a vessel that has a hermetically sealed top to fully capture all of the filters capabilities. The **SRID** is perfectly positioned to handle: standard bags, absolute rated filters and high efficiency large diameter pleated hybrid filters (Madd Maxx). The **SRID** vessel line is raising the bar in the OEM market by delivering superior value in a cost-effective design.



SRID Twin and **SRID Duplex** bag vessels offer economical filtration for nominally rated applications between 150 and 300 gpm.

The **SRID Twin** filter system is comprised of two #2-size housings piped together and joined to a common header. This design divides flow equally between both housings and also reduces cost approximately 50% compared to a multi-bag housing holding 2 bags inside.



The **SRID Duplex** filter systems offer great flexibility for continuous on-line filtration requirements. This allows for continuous operation by directing the flow from one vessel to another by opening and closing of valves. This allows one side to be serviced, while the other vessel is in use.

NEED ELEMENTS FOR YOUR VESSEL?

The following are most commonly used with the SRID line:

MADD-MAXX—PAGES 74-94

FILTER BAGS—PAGES 98-124

As always, discuss your options with your local sales representative to find the best fit for your application.

ORDER GUIDE



SRID FEATURES	
Hermetic radial o-ring sealed retainer basket: Eliminates potential for bypass and "basket rocking"	
Adjustable tri-pod stand: Offers flexibility when plumbing into an existing line	
Inlet/Outlet Orientation: Side-in Bottom-out (standard) Side-in Side-out (optional)	Recessed basket design: Reduces operator exposure to unfiltered liquid. Less mess when making bag changes and no spillage of unfiltered liquids
Standard Pressure ratings: 150 psi	1" Bottom Drain: Allows for full evacuation of fluids
1" NPT bottom drain port	¼" NPT vent port in lid
Perforated retainer basket	Basket is Radial o-ring sealed
Adjustable-height legs tripod stand	2" NPT & RFF inlet and outlet connections
Built-in volume displacer in cover	O-ring sealed cover
SRID OPTIONAL FEATURES	
Wire mesh basket	Mesh lined baskets for straining application from 20 to 200 mesh
Side Outlet configuration	3" NPT or RFF connections
Eye nut closure system	Filter bag compression device
SRID TWIN FEATURES	
Inlet/Outlet Orientation: Side-in Side-out (standard) Side-in Bottom-out (optional)	
150 psi design, available to 1,000 psi	1/8" Stainless Steel perforated basket (standard)
Positive cover seal	Easily cleaned
Low Pressure Drop	Adjustable height tripod stand
SRID DUPLEX FEATURES	
Inlet/Outlet Orientation: Side-in Side-out (standard) Side-in Bottom-out (optional)	
150 psi design, available to 1,000 psi	1/8" Stainless Steel perforated basket (standard)
Positive cover seal	Easily cleaned
Low Pressure Drop	Adjustable height tripod stand

ORDER OPTIONS

VESSEL	
SRID	Strainrite Industrial Duty Series
BAG SIZE	
1 2	#1 size bag* #2 size bag
<i>*Not available in Twin or Duplex</i>	
INLET/OUTLET	
2 2F 3 3F	*2" NPT 2" RFF *3" NPT 3" RFF
<i>*Not available in Twin or Duplex</i>	
MATERIAL	
A B	Carbon Steel 304 Stainless Steel
STYLE	
- Twin Duplex	Single No valves Valves
O-RING*	
S B V E TV	Silicone Buna N Fluorocarbon EPDM Encapsulated Fluorocarbon
<i>*Not applicable to Twin or Duplex</i>	
OPTIONS	
WMB SO/180 EN EP MLB CLH DPG	Wire Mesh Basket Side Outlet 180 degrees* Eye Nut Electro Polish Finish Mesh-Lined Basket Cover Lid Handle Differential Pressure Gauge Ports (2)
<i>*consult factory for other orientations</i>	

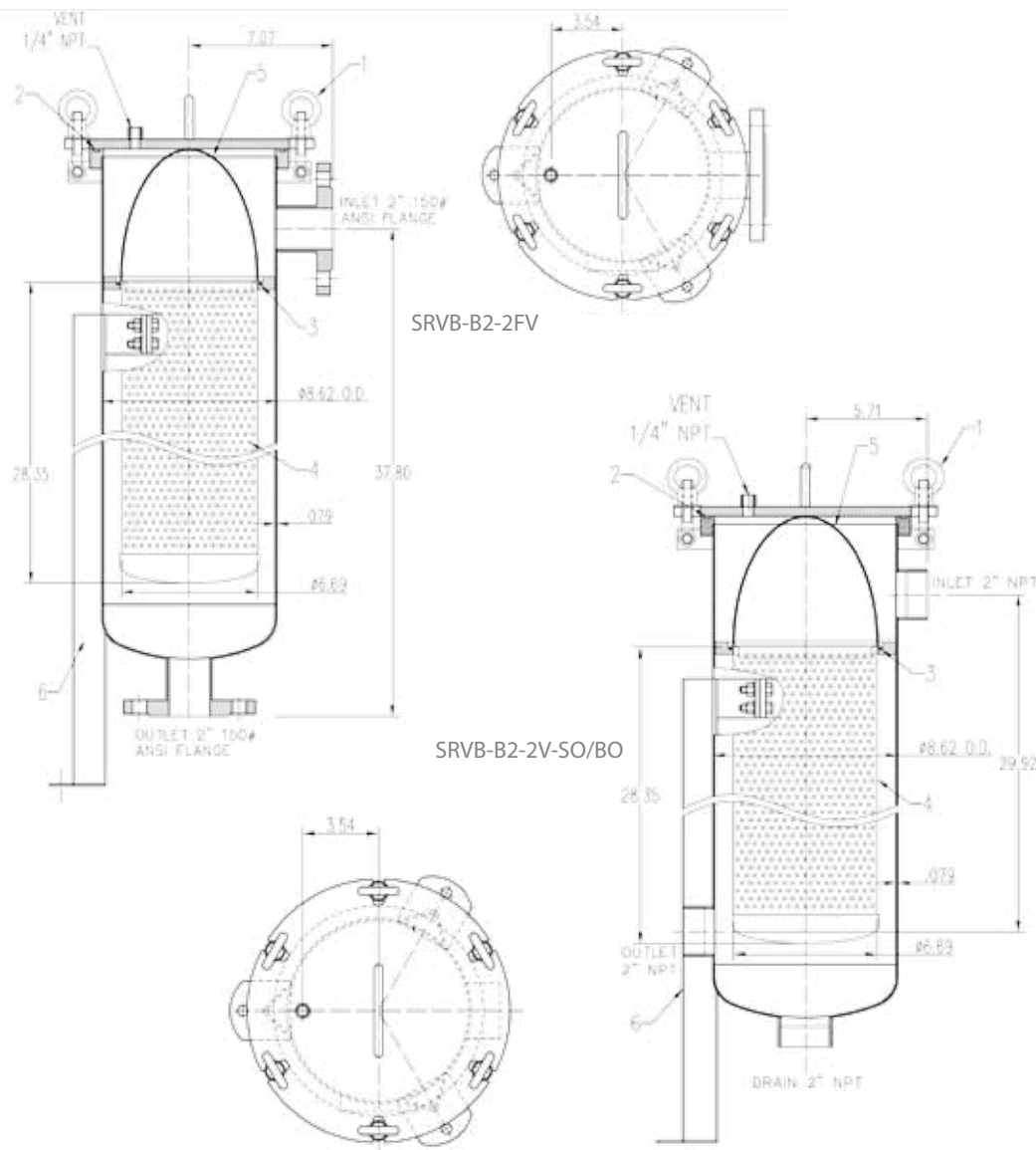
This is not a comprehensive list. We can build your vessel to suit your specifications. Call one of our customer service representatives for pricing and availability.

SRVB

Value Design Bag Vessels

The **SRVB Value Design** vessels provide economical filtration of a wide variety of liquids in a lightweight, externally polished stainless steel design, with features including a swing bolt secured, quick opening cover and an internal positive pressure bag hold-down device. The **SRVB** vessels accommodate one standard #2 bag. These vessels are manufactured from polished and passivated 304 stainless steel and rated for 150 psi (10.3 bar). For added corrosion resistance, all cover bolt and leg mounting hardware is made from stainless steel as well.

SRVB multi-bag vessels accommodate four or six standard #2 bags. These vessels are manufactured from polished and passivated 304 stainless steel and rated for 150 psi (10.3 bar).



SRVB

NEED ELEMENTS FOR YOUR VESSEL?

The following are most commonly used with the SRVB line:

MADD-MAXX—PAGES 74-94

FILTER BAGS—PAGES 98-124

As always, discuss your options with your local sales representative to find the best fit for your application.

ORDER GUIDE

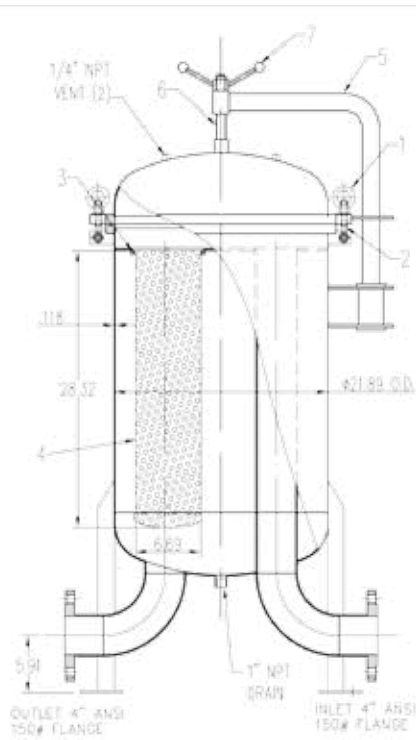


SRVB-B4-24FV

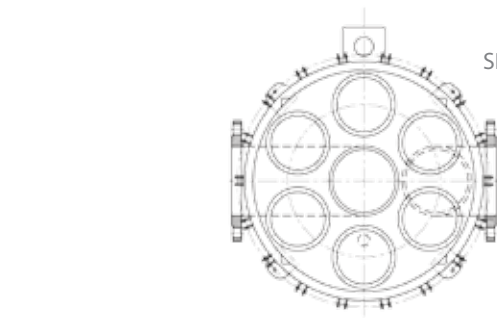
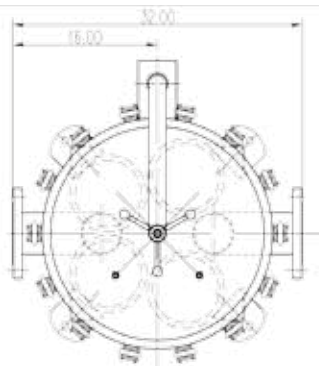
SRVB SINGLE BAG
NPT option offers dual 2" outlet ports on bottom and side locations
Mounting legs are adjustable, providing flexibility for installation height and orientation volumes
SRVB MULTI-BAG
Bottom in-line connection design
SRVB SINGLE & MULTI-BAG
Maximum Allowable Pressure: 150 psi (10.3 bar)
Maximum Allowable Temperature: 300°F (149°C)
Swing bolted o-ring closure seal provides quick & positive seal with easy access to the vessel interior and filter bag
FNPT threaded and ANSI B16.5 flanged connections are available in specific models
Fluorocarbon seals are standard with other material options available
Standard threaded FNPT vent & drains
Standard stainless steel closure bolt hardware
Polished exterior & pickle passivate interior/exterior for enhanced corrosion resistance

ORDER OPTIONS

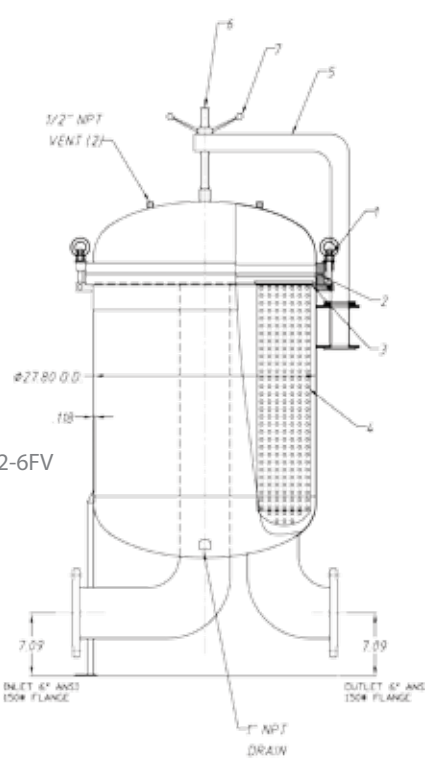
VESSEL	
SRVB	Strainrite Value Design Bag Vessel
MATERIAL	
B	304 Stainless Steel
BAG COUNT	
-	One bag
4	Four bags
6	Six bags
BAG SIZE	
1	*#1 size bag
2	*#2 size bag
<i>*Single-bag units, special request only</i>	
INLET/OUTLET	
2	*2" NPT
2F	*2" RFF
4F	*4" RFF
6F	**6" RFF
<i>*Single-bag units only **Six bag count only</i>	
O-RING	
V	Fluorocarbon
B	*Buna N
E	*EPDM
<i>*Single-bag units only, Special request only Purchased and packaged separately</i>	
DUAL SIDE OUT/BOTTOM OUT	
SO/BO	This suffix only applies to SRVB-B1-2V and SRVB-B2-2V, and is always and automatically added to these 2 vessels only



SRVB-B42-4FV



SRVB-B62-6FV



This is not a comprehensive list. We can build your vessel to suit your specifications. Call one of our customer service representatives for pricing and availability.

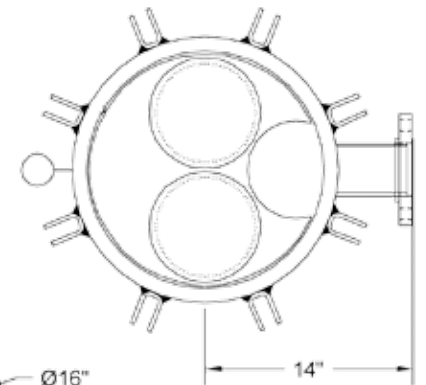
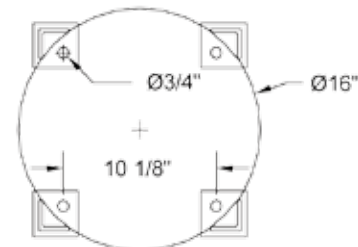
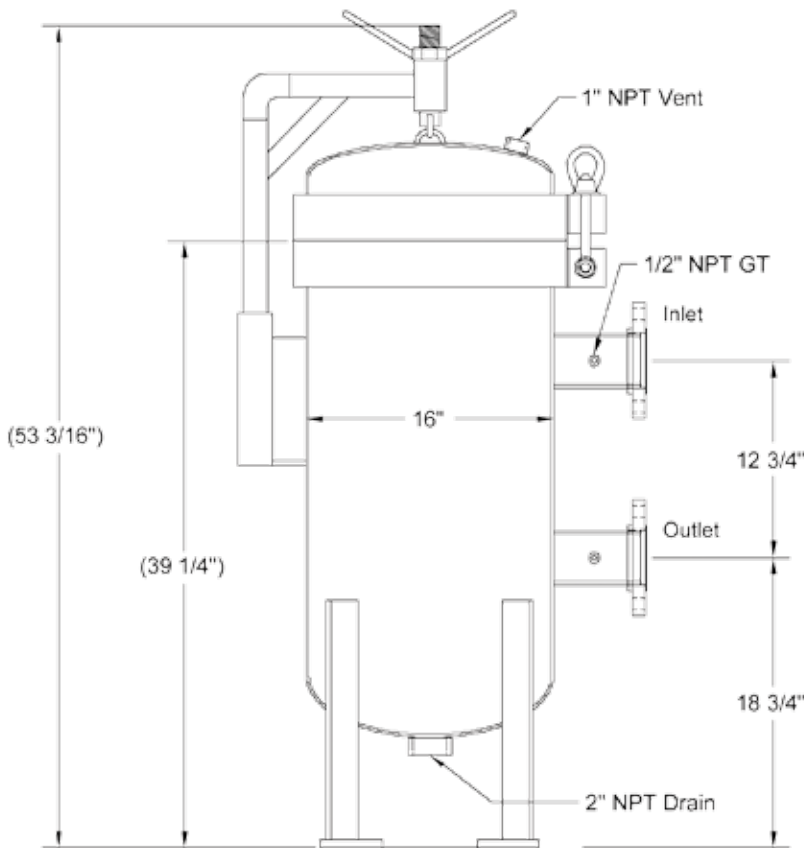
SRMB

Multi-Basket Vessels

The **SRMB Multi-Basket Filter Vessel** offers large surface areas capable of handling up to 5600 gpm in a single housing. Increasing surface area allows for longer processing time prior to filter change-out.

Containing anywhere from 2 to 28 bags/baskets in a single vessel, our standard side-inlet/side-outlet design offers the greatest inlet/outlet flexibility and doesn't require a platform to be built, in order to change-out or clean the filter elements or strainers.

SRMB
Side In/Side Out



NEED ELEMENTS FOR YOUR VESSEL?

The following are most commonly used with the SRMB line:

MADD-MAXX—PAGES 74-94

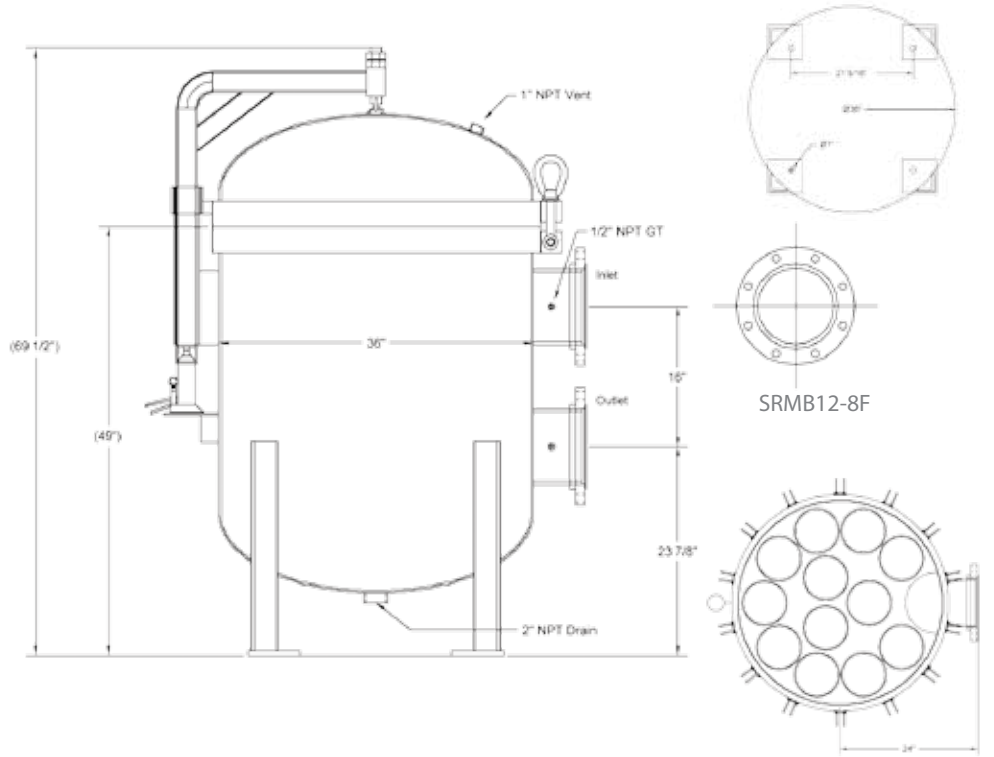
FILTER BAGS—PAGES 98-124

As always, discuss your options with your local sales representative to find the best fit for your application.

ORDER GUIDE



SRMB STANDARD FEATURES										
Inlet/Outlet Orientation: Ergonomically superior Side-in Side-out (standard) Bottom-in Bottom-out (optional)										
Low pressure drop					Positive cover seal					
Easily cleaned					Stainless Steel perforated baskets					
1" to 2" NPT drain port on bottom					0.5" to 1" NPT pressure gauge/vent tap					
Swing bolt closures					Davit Lift					
Pipe sizes from 2" to 14" RFF connections					Filter Bag Retainer Ring					
Differential pressure gauge taps										
SRMB OPTIONAL FEATURES										
Epoxy coating and fuse coating					Pressure ratings up to 300 psi					
Easily cleaned					Stainless Steel perforated baskets					
Mesh-lined basket for straining applications: 50 micron and higher					Wire mesh support baskets					
Choice of lid-lifting devices: Hydraulic-Jack or Manual Wheel Davit					ASME code stamp					
SRMB DIMENSIONS CHART , SIDE-IN / SIDE-OUT										
UNIT TYPE	BASKET COUNT	STANDARD CONNECTION	A Overall Height	B Height to opening	C Inlet to Outlet	D Diameter	SURFACE AREA (Sq. Ft.)	MAX GPM (Strainer)	MAX GPM (Filter Bags)	MAX SHIPPING WEIGHT (Lbs)
SRMB 2	2	3" RFF	55"	40"	12 ³ / ₄ "	16"	9.0	600	400	380
SRMB 3	3	3" RFF	55"	40"	12 ³ / ₄ "	18"	13.5	900	600	470
SRMB 4	4	4" RFF	55"	42"	12 ³ / ₄ "	24"	18.0	1200	800	660
SRMB 5	5	6" RFF	60"	42"	12 ³ / ₄ "	26"	22.5	1500	1000	775
SRMB 6	6	6" RFF	60"	42"	12 ³ / ₄ "	26"	27.0	1800	1200	775
SRMB 8	8	8" RFF	66"	47"	16"	30"	35.5	2400	1600	900
SRMB 10	10	8" RFF	74"	52"	16"	36"	44.5	3000	2000	1250
SRMB 12	12	8" RFF	74"	52"	16"	36"	54.0	3600	2400	1350



ORDER OPTIONS

VESSEL	
SRMB	Strainrite Multi-Bag Series
BAG COUNT	
2, 3, 4, 5, 6, 8, 10, 12	
INLET/OUTLET	
2	2" NPT
2F	2" RFF
3F	3" RFF
4F	4" RFF
6F	6" RFF
8F	8" RFF
10F	10" RFF
MATERIAL	
A	Carbon Steel
B	304 Stainless Steel
C	316 Stainless Steel
OPTIONS	
BIBO	Bottom in/Bottom out
SIBO	Side In/Bottom Out
ML	Mesh-Lined Basket
U	3rd Party ASME Code Inspected
SSB	Swing Bolts/Eye Nut Stainless Steel

This is not a comprehensive list. We can build your vessel to suit your specifications. Call one of our customer service representatives for pricing and availability.

SRMS

Manifold Filtration Systems

Strainrite's **SRMS Manifold Filtration Systems** consist of two or more filter vessels piped in series or parallel. Strainrite offers countless configurations and flow designs depending on the user's specific needs. The standard design is to configure the vessels in parallel with isolation valves on each vessel.

A four-vessel system can also be configured in a box design, which allows for graduated filtration and continuous flow. Given the modular nature of manifold systems, throughput capability can be easily expanded or contracted as needed, and the footprint is adaptable to available space.

Contact our engineering personnel to configure the ideal system for your application.



SRMS -
8 Vessels

NEED ELEMENTS FOR YOUR VESSEL?

The following are most commonly used with the SRMS line:

MADD-MAXX—PAGES 74-94

FILTER BAGS—PAGES 98-124

As always, discuss your options with your local sales representative to find the best fit for your application.

ORDER GUIDE



SRMS	
-in volume displacer in cover (SRHD)	150 psi design, available to 300 psi
Inlet/outlet orientation: Side-in/Bottom-out (standard)	Easily cleaned
Low pressure drop	Stainless Steel wire mesh basket
Positive cover seal	ASME Code stamp available on all SRHD-style vessels



SRMS -
4 Vessels



ORDER OPTIONS

VESSEL	
SRMS	Strainrite Manifold System
VALVE OPTIONS	
N V	No Valves Valves
VESSEL COUNT	
2, 3, 4, 5, 6, 8, 10	
BRANCH SIZE	
2 3	2" pipe 3" pipe
MATERIALS	
A B C	Carbon Steel 304 Stainless Steel 316 Stainless Steel
HEADER	
2H 3H 4H 6H	2" header 3" header 4" header 6" header
VESSEL TYPE	
SRHD SRID	
OPTIONS	
EP MLB UM U SSB DPG	Electro Polish Finish Mesh-Lined Basket Code Stamped 3rd Party ASME Code Inspected Swing Bolts/Eye Nut Stainless Steel Differential Manifold Pressure Gauge Ports

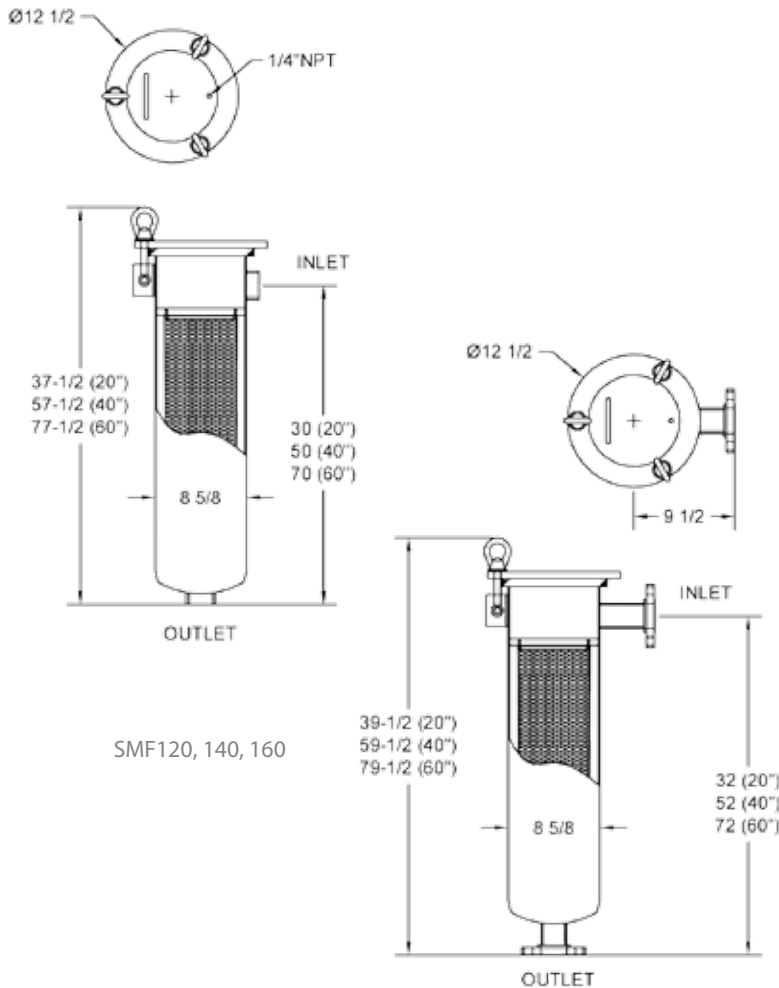
This is not a comprehensive list. We can build your vessel to suit your specifications. Call one of our customer service representatives for pricing and availability.

SMF & HSMF

Strainrite Maxx Flow & Maxx Trap Vessels

The **SMF** and **HSMF** line of filters vessels are designed to accommodate our Maxx Flow and Maxx Trap large diameter pleated filters. These heavy duty vessels are engineered to handle your most demanding applications and can be supplied as either ASME code for aggressive chemical applications or Non code for more general industry requirements.

both the single and multi-filter 40" length vessels are offered in vertical (**SMF**) or horizontal (**HSMF**) configurations where the 60" vessels are standard in the horizontal (**HSMF**) configuration. All retainer baskets are welded in place in our standard designs.



NEED ELEMENTS FOR YOUR VESSEL?

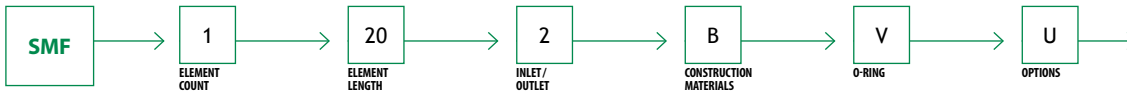
The following are most commonly used with the SMF/HSMF line:

MAXX-FLOW—PAGE 86

MAXX-TRAP—PAGE 88

As always, discuss your options with your local sales representative to find the best fit for your application.

ORDER GUIDE

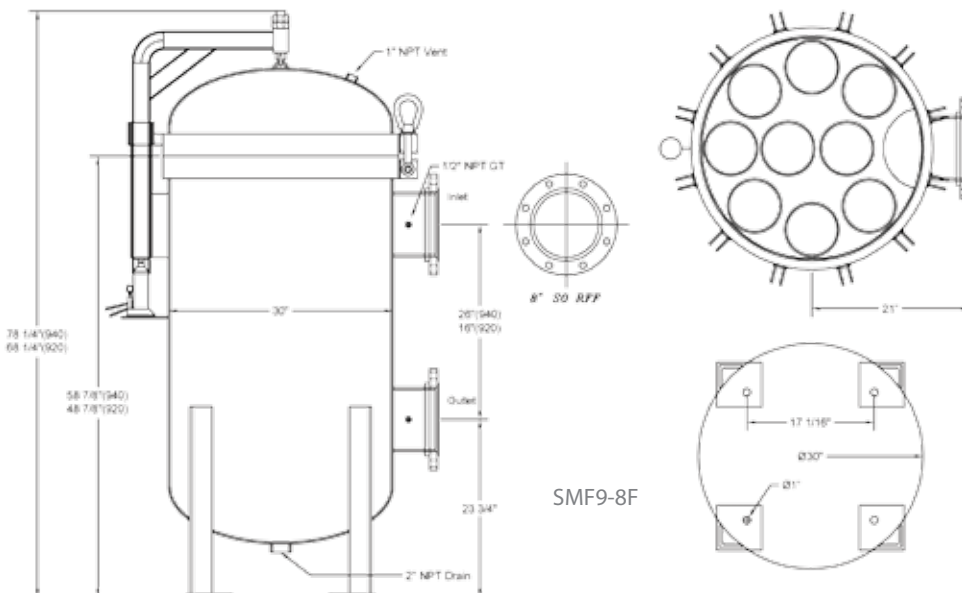


SMF1202BVU

SMF/HSMF STANDARD FEATURES						
Welded in baskets that eliminate bypass potential between basket and housing						
Optional removable baskets for clean in place operations (SMF only)			Inside/out flow direction that traps contaminants inside the element			
High flow rates with low pressure drops			Positive cover seal			
Swing bolt closure for quick change outs			ASME Code stamp available			
150 PSI design pressure			Adjustable height tripod stand			
SMF MEASUREMENTS						
UNIT TYPE	BASKET COUNT	STANDARD CONNECTION	A Overall Height	B Height to opening	C Inlet to Outlet	D Diameter
SMF 120	1	2" RFF	39"	*36"	32"	8.625"
SMF 140	1	2" RFF	59"	*56"	52"	8.625"
SMF 340	3	4" RFF	74"	56"	28"	18"
SMF 640	6	6" RFF	74"	57"	28"	24"
SMF 940	9	8" RFF	78"	59"	26"	30"
SMF 1340	13	10" RFF	84"	64"	24"	36"
*Vessel itself can be raised or lowered on the support legs.						
HSMF MEASUREMENTS						
UNIT TYPE	BASKET COUNT	STANDARD CONNECTION	*A Overall Height	D Diameter		
SMF 140	1	2" RFF	48"	8.6"		
SMF 160	1	2" RFF	48"	8.6"		
SMF 340	3	4" RFF	60"	18"		
SMF 360	3	4" RFF	60"	18"		
SMF 740	7	6" RFF	64"	24"		
SMF 760	7	6" RFF	64"	24"		
SMF 1040	10	8" RFF	70"	30"		
SMF 1060	10	8" RFF	70"	30"		
SMF 1340	13	10" RFF	76"	36"		
SMF 1360	13	10" RFF	76"	36"		
*Fixed height						

ORDER OPTIONS

VESSEL	
SMF HSMF	MAXX Flow Vessel Horizontal MAXX Flow Vessel
ELEMENT COUNT	
1, 3, *6, **7, *9, **10, 13, *18	
<small>*SMF only **HSMF only</small>	
ELEMENT LENGTH	
*20, 40, 60	
<small>*SMF only</small>	
INLET/OUTLET	
2	2" NPT
2F	2" RFF
3	3" NPT
3F	3" RFF
4	4" RFF
6	6" RFF
8	8" RFF
10	10" RFF
12	12" RFF
MATERIALS	
A B C	Carbon Steel 304 Stainless Steel *316 Stainless Steel
<small>*SMF only</small>	
O-RING	
B E V	Buna N EPDM Fluorocarbon
OPTIONS	
U UM BIBO	ASME Code U Stamp *ASME Code UM Stamp Bottom-in Bottom-out
<small>*Only available on single vessels</small>	



This is not a comprehensive list. We can build your vessel to suit your specifications. Call one of our customer service representatives for pricing and availability.

AQ2

AquaRite Vessels

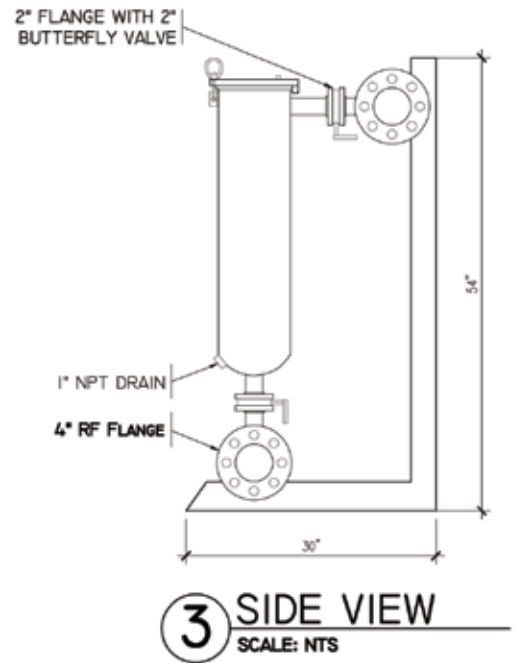
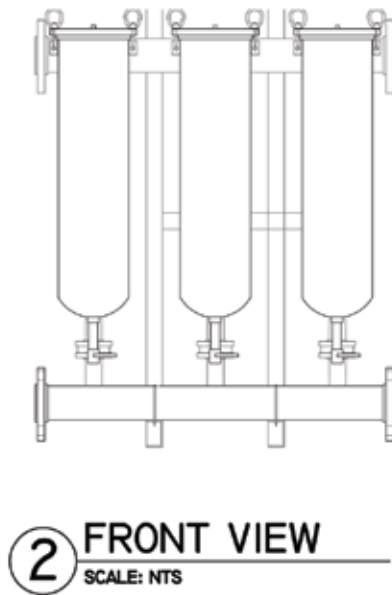
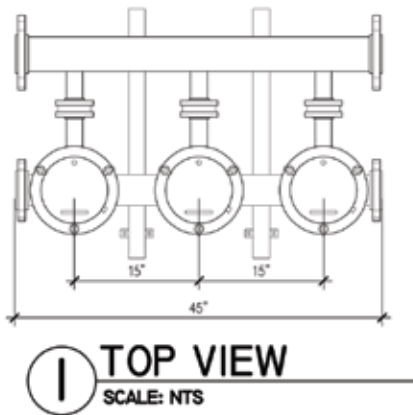
Strainrite's **AquaRite Vessel** was developed by our in-house engineering team for the expressed purpose of eliminating vessel-to-bag bypass, a critical element when high efficiency filtration is required. Strainrite's proprietary "Five Points of Seal" design has proven to be a major advance in filter vessel technology, performing admirably where the competition hasn't.

Featuring an effective seal on all three crucial planes of the bag, (the top, side, and bottom) as well as two additional o-rings that eliminate the likelihood of bypass along the vessel's interior wall, the **AquaRite** is truly your best choice for potable water filtration performance.



AQ2 in a manifold system

AQ2-2F - Manifold System



NEED ELEMENTS FOR YOUR VESSEL?

The following are most commonly used with the AQ2:

AQUA-MAXX—PAGE 78

AQUA-RITE HPM—PAGE 110

As always, discuss your options with your local sales representative to find the best fit for your application.

ORDER GUIDE

AQ2

2F

INLET/
OUTLET

PE

OPTIONS

AQ2-2F-PE

SRMB STANDARD FEATURES

Inlet/Outlet Orientation: Side-in Bottom-out (standard)	Double o-ring basket seal, which eliminates bypass
Low pressure drop	Positive cover seal
Easily cleaned	Stainless Steel wire mesh basket
Adjustable height legs	Built-in volume displacer in cover
Standard 150 psi design	304 Stainless Steel construction
Covers are O-ring sealed	Threaded connections
DP Taps	Large area, heavy-duty baskets
1" Drain	Liquid displacer dome
SRMB OPTIONAL FEATURES	
Different outlet connections	Extra-length legs
Flange connections	Pre-fab plex units

The most efficient filter vessel deserves the most efficient filter! Using Strainrite's acclaimed, FDA-Compliant [AquaRite HiPro Micro Filter Bags](#) ensure the purity, and now our [Aqua-MAXX Pleated Elements](#) ensure the purity of your end product.

[AquaRite Vessels](#) have been successfully used in potable water applications across the U.S. and Canada. [AquaRite vessels](#) are perfectly designed to hermetically seal [AquaMAXX-PFA](#) & [AquaMAXX-FFA](#) hybrid elements and [HPM99-CC-2SR](#) & [HPM99-CCX-2SR](#) bags.



Aqua-MAXX
pleated element



Aqua-Rite
HPM filter bag

ORDER OPTIONS

VESSEL	
AQ2	Strainrite AquaRite Vessel
INLET/OUTLET	
2 2F	2" NPT 2" RFF
OPTIONS	
- PE	AquaRite HPM Filter Bag Housing AquaMAXX Element Housing

This is not a comprehensive list. We can build your vessel to suit your specifications. Call one of our customer service representatives for pricing and availability.